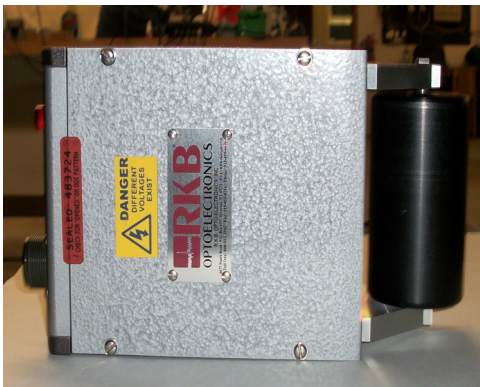
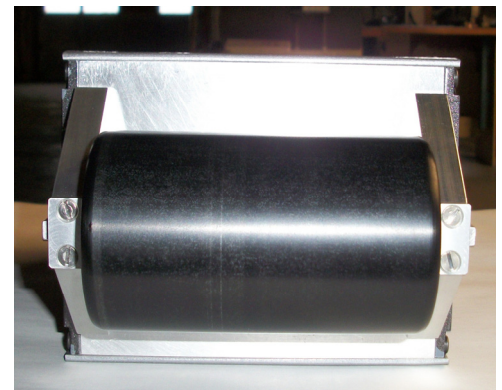
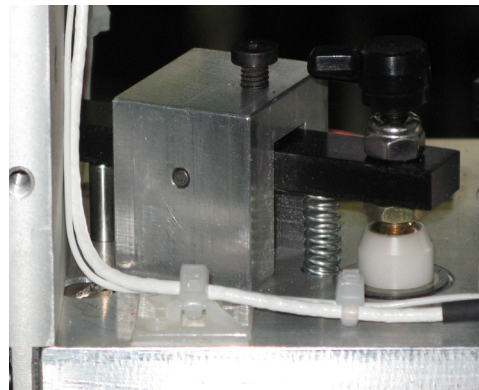
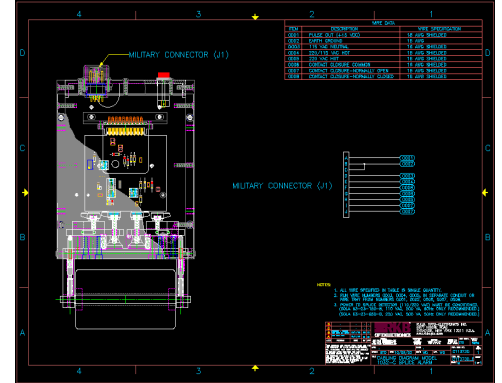
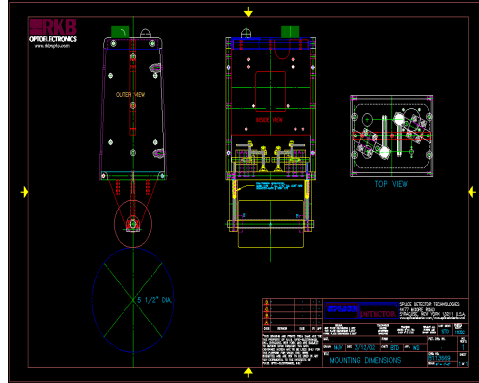


**Equipment Pictorial**  
**Model 1032C Enforcer® Metalized Splice Detector™ Technology**



**R.K.B. OPTO-ELECTRONICS, INC.**

6677 Moore Road • Syracuse, New York • 13211 • United States of America

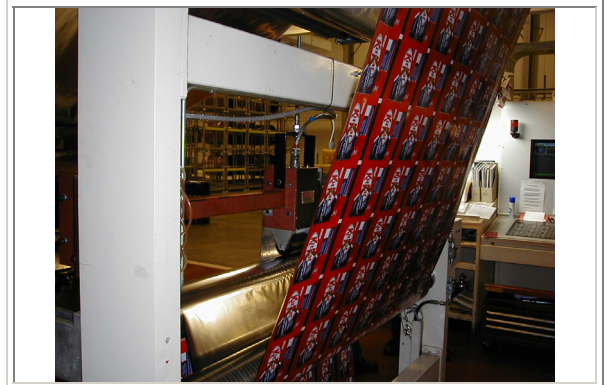
Tel: +001-315-455-6636 • Fax: +001-315-455-8216 • Email: sales@splicedetector.com

Internet: www.rkbopto.com / www.splicedetector.com / www.splicedetector.net

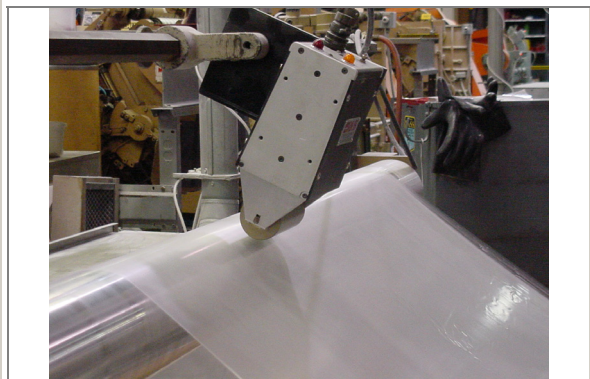




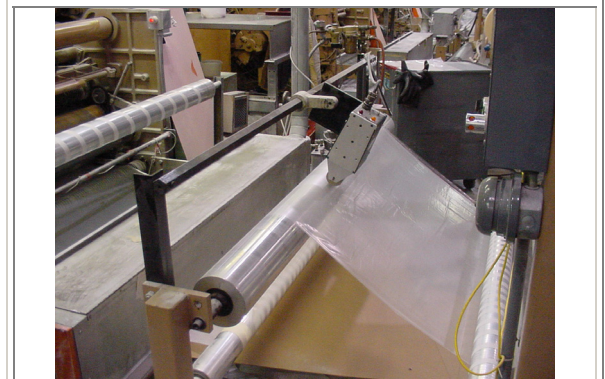
**Model 1032C Enforcer® Metalized Splice Detector™ Technology Alcan Packaging Installation**



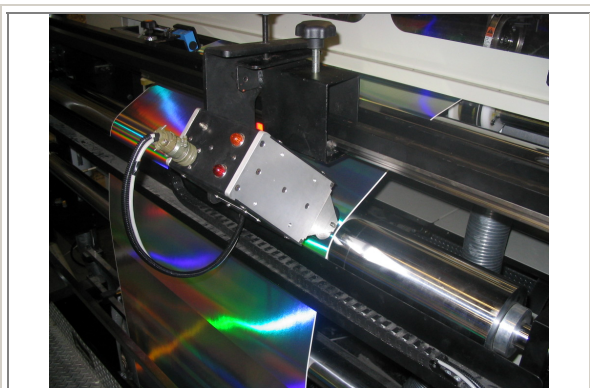
**Model 1032C Enforcer® Metalized Splice Detector™ Technology Alcan Packaging Installation**



**Model 1032C Enforcer® Metalized Splice Detector™ Technology Curwood Installation**



**Model 1032C Enforcer® Metalized Splice Detector™ Technology Curwood Installation**



**Model 1032C Enforcer® Metalized Splice Detector™ Technology European Installation**



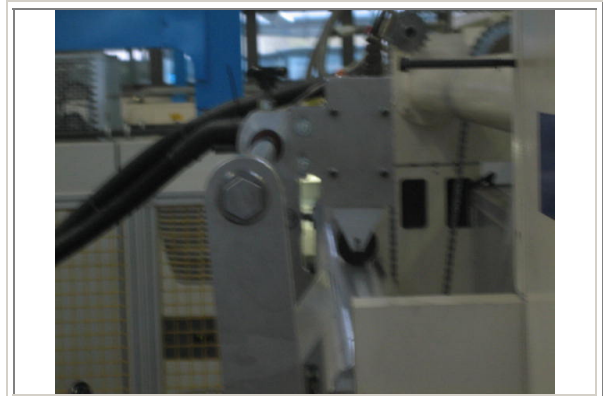
**Model 1032C Enforcer® Metalized Splice Detector™ Technology European Installation**

**R.K.B. OPTO-ELECTRONICS, INC.**

6677 Moore Road • Syracuse, New York • 13211 • United States of America  
Tel: +001-315-455-6636 • Fax: +001-315-455-8216 • Email: sales@splicedetector.com  
Internet: www.rkbopto.com / www.splicedetector.com / www.splicedetector.net



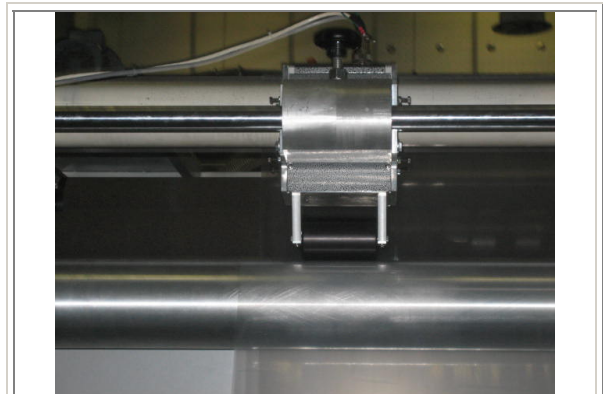
**Model 1032C Enforcer® Metalized  
Splice Detector™ Technology  
European Installation**



**Model 1032C Enforcer® Metalized  
Splice Detector™ Technology  
Asian Installation**



**Model 1032C Enforcer® Metalized  
Splice Detector™ Technology  
European Installation**



**Model 1032C Enforcer® Metalized  
Splice Detector™ Technology  
Asian Installation**

**R.K.B. OPTO-ELECTRONICS, INC.**

6677 Moore Road • Syracuse, New York • 13211 • United States of America  
Tel: +001-315-455-6636 • Fax: +001-315-455-8216 • Email: sales@splicedetector.com  
Internet: www.rkbopto.com / www.splicedetector.com / www.splicedetector.net